

TIGAFREE-X150

ATAGLANCE

- The largest board in the Tiga range for 2008.
- Possesses a very different shape to its smaller siblings in the Free-X series, with a concave in the middle of the deck to place the mast-track lower and help channel the sail's power into the board to pin it down.
- The underside is also significantly different with a massive mono concave in the front of the hull, blending with double concave until it takes over completely by the end of the mast track. This then translates to double concave with vee by the front strap before finishing with vee in the tail.
- The fittings are good with the same familiar firm contoured deckpads, easily adjustable Velcro straps and a 48cm fin.
- Large scallops in deck of tail before finishing with a square tail.
- One of the largest boards on test here, it possesses one of the most elaborate bottom shapes we have seen since the Starboard Hypersonic and Tabou Manta, so it would be interesting to see how it goes.



RIDEANDHANDLING

- The TIGA has some very interesting features, which start to become apparent as soon as you step on it. Firstly the deck possesses a concave shape, which is useful in that it encourages the rider's feet to align along the centre-line of the board – very useful practice for intermediates in actions such as uphauling.
- With power applied the 150 replies willingly and accelerates very positively, feeling light and responsive underfoot for such a large board.
- The straps are comfortable and easy to locate, and whilst the deckpads are quite a bit more abrasive than others, they provide a good solid connection to the board's surface. Wedging your feet against the rail, you can really crank the board upwind, driving confidently against the fin, the raised tier in the back deckpad being in the perfect position to push against. It really does perform well upwind.
- It is also one of the fastest in this group across the wind, accelerating and releasing more with the provision of more power.
- In well powered conditions the board does tend to require more input than others here to control, railing up if you lose concentration. However, control is never too far away and this would undoubtedly be an endearing asset to the more experience rider, who would

thrive on the challenge to pin the board down and keep it tracking efficiently.

- In the gybe the TIGA also performed, banking in easily and displaying a great deal of versatility to the carving angle it could adopt. Such is its level of bite that it really encourages the rider to push the board in deeper in the next gybe – impressive for such a large wide platform. It is a confidence building board to sail.
- Tacking is also not an issue, the concave deck once again helping to locate your feet correctly as you jump round to the other side.

THEVERDICT

Suitability: The TIGA is an impressive board that can mix it up with the best all-rounders in this group. Suitable for riders of all sizes and abilities.

+ Early planing, smooth exciting ride and good gybing versatility.

- Deckpads are a little hard and abrasive on bare feet initially.

The TIGA 150 was one of the surprises of this group and doesn't stand on ceremony for any other board. Fast, exciting and versatile, it has plenty of performance and the user friendliness to match.



The Official Test Centre
Windsurf Holidays. With Purpose

El Médano, Tenerife

T: +44 (0)121 288 9965 (UK)
T: +34 922 179 401 (Tenerife)

www.otc-windsurf.com
info@otc-windsurf.com



I can't recommend the OTC enough. While I was there I tried about 8 boards and quite a lot of sails. The range of kit and the lads who run the place are just brilliant.
 Ken Morton [windsurf.co.uk Forum](http://www.windsurf.co.uk/Forum)

What is The OTC?

CONCEPT

The OTC is a unique windsurfing centre offering the first real opportunity for you to compare the boards and sails from each major brand for yourself ... and all in the relaxed atmosphere of a holiday environment. It was the brainchild of Tris Best, who, acknowledging the privileged position he was in whilst testing all the latest windsurfing equipment for magazines, wanted to extend the same opportunity to a wider audience.

EQUIPMENT

The centre stocks the very latest equipment from all the major board and sail manufacturers, including:

Boards: F2, Fanatic, Goya, JP Australia, Mistral, Naish, RRD, Starboard, Tabou, Witchcraft

Sails: Ezzy, Gaastra, Neil Pryde, Naish, North Sails, Severne, Simmer, Tushingham

From wave to freestyle and crossover, into the expansive realms of freeride, almost every discipline and equipment category is represented, catering for all rider styles and abilities.

LOCATION

The centre is situated in the town of El Médano on the island of Tenerife just ten minutes transfer from Reina Sofia Airport in the south. With an average air temperature of 22 degrees Celsius, the OTC is open throughout the year, and benefits from three fantastic windsurfing areas to cater for every windsurfing ability and preference.

South Bay is a true windsurfer's playground ideal for intermediates and above, providing a large bump-and-jump sailing area with the added benefit of having a safe, enclosed sandy beach.

The Harbour Wall is easily accessible from the centre, and offers a clean smooth face at the right tide state. A good introduction to wave riding for the uninitiated, it is a great deal of fun to ride, with the added security of a safe exit channel within easy reach at all times.

Cabezo is the northern most bay of the town, which, with its typical European cross-onshore conditions provides the ideal test arena for wave and crossover equipment. Hosting World Tour events in the past, the sailing standard in the bay is awe-inspiring and is sure to captivate even the non-windsurfer's imagination.

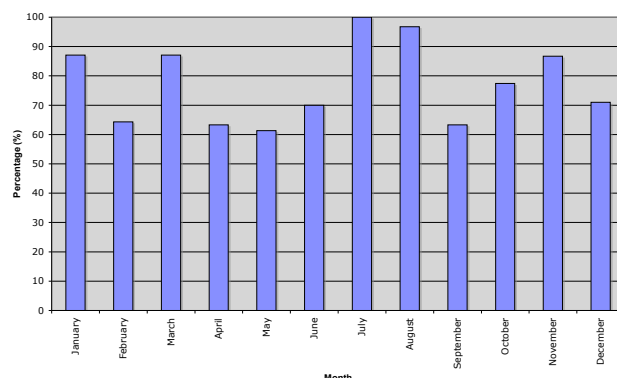
THE CENTRE

Contained in a modern building directly on the beachfront of South Bay, the centre caters for a limited number of clients each week, ensuring every opportunity to try the desired kit.

WIND STATISTICS

Boasting over 250 days of planing conditions (force four and above) a year, El Médano is Tenerife's primary windsurfing location and is well exposed to the influence of the Atlantic, offering some of the most consistent conditions found in the Canary archipelago.

A Chart to Show the Percentage of Planing Days in El Médano Per Month



The Official Test Centre
Windsurf Holidays. With Purpose

El Médano, Tenerife

T: +44 (0)121 288 9965 (UK)
 T: +34 922 179 401 (Tenerife)

www.otc-windsurf.com
info@otc-windsurf.com