

NAISHFREEWIDE130

ATAGLANCE

- The Free Wide series is another all new series from Naish for 2008, taking over from the Icon of 2007, which never really took off.
- The Free Wide range has four models, ranging from 120 to 160L (of which the 130 is the second smallest), shaped by Richard Greene, the Maui shaper who is internationally more renowned for shaping dedicated down the line wave boards for another major brand.
- They are designed for effortless early planing, easy handling and a new level of easy gybing in the lightest winds.
- The bottom shape is relatively similar to the All Terrain, transitioning from flat in the nose (also with a subtle bevel to the shoulders), to vee with double by the mast track, which then fades out gradually to the tail to become straight vee. There are also some small tail cutouts in the rear to provide that extra release and fin drive.
- The sandwich construction includes wood on both the deck and hull as well as biaxial glass to provide enough durability.
- There is a large area of the rear of the board covered with EVA, which also incorporates the cubic patterned deckpads with built in dual density absorbers.
- 40cm composite molded powerbox fin.
- The other new feature is a stepped rail design, combining a flat central deck with wave-board rail shapes, which are said to deliver unparalleled performance in a board of this size.

RIDEANDHANDLING

- The Free Wide is relatively long and wide, which coupled with its flat deck around the mast track makes it stable and easy at rest, as well as easy to direct off the plane.
- The provision of power makes it rise up onto the plane smoothly and progressively, encouraging the rider to move back on the board.
- With a good variety of strap position options, in their outboard positions they aren't the easiest to get into, due to the stiffness of the straps holding their shape well. Once in place the feet feel very secure thanks to the cubic pattern on the pads providing loads of grip.
- The board continues to accelerate willingly up to an impressive speed. The feedback provided is very interesting – it is certainly an exciting board to sail, feeling lively and providing good feedback through the fin to push a good performance out of the board. It doesn't however have that sharp harsh clattery feel of Naish boards of old, feeling lively but also



cutting quite a smooth path through the water. As such it has a great deal of appeal from the intermediate to the experienced sailor.

- In overpowered conditions it is a gem to use, and with a bit of input from the rider, maintains control when other boards are becoming a handful.
- This board is a stunning gyber for 130L and has a very versatile yet predictable nature. Bank it in and it will cut a smooth long drawn out arc easily, keeping its speed well. If at any stage you want to tighten it up, you can by just ploughing the rail in tighter. It never seems to catch and stall no matter how hard we tried – a great asset, especially in super powered conditions where you can really trust the rail.

THEVERDICT

Suitability: A cracking all-round performer in this group, the 130 has a wide user appeal, from intermediate to expert.

+ Lively yet controlled nature, fittings and stunning carving ability.
- Hard to fault.

The Naish freeride series has come on massively for 2008 and this 130 is no exception. Fast, exciting to sail and superb fun to gybe, it leaves the Icon of the past in its wake.



The Official Test Centre
Windsurf Holidays. With Purpose

El Médano, Tenerife

T: +44 (0)121 288 9965 (UK)
T: +34 922 179 401 (Tenerife)

www.otc-windsurf.com
info@otc-windsurf.com



I can't recommend the OTC enough. While I was there I tried about 8 boards and quite a lot of sails. The range of kit and the lads who run the place are just brilliant.
 Ken Morton [windsurf.co.uk Forum](http://www.windsurf.co.uk/Forum)

What is The OTC?

CONCEPT

The OTC is a unique windsurfing centre offering the first real opportunity for you to compare the boards and sails from each major brand for yourself ... and all in the relaxed atmosphere of a holiday environment. It was the brainchild of Tris Best, who, acknowledging the privileged position he was in whilst testing all the latest windsurfing equipment for magazines, wanted to extend the same opportunity to a wider audience.

EQUIPMENT

The centre stocks the very latest equipment from all the major board and sail manufacturers, including:

Boards: F2, Fanatic, Goya, JP Australia, Mistral, Naish, RRD, Starboard, Tabou, Witchcraft

Sails: Ezzy, Gaastra, Neil Pryde, Naish, North Sails, Severne, Simmer, Tushingham

From wave to freestyle and crossover, into the expansive realms of freeride, almost every discipline and equipment category is represented, catering for all rider styles and abilities.

LOCATION

The centre is situated in the town of El Médano on the island of Tenerife just ten minutes transfer from Reina Sofia Airport in the south. With an average air temperature of 22 degrees Celsius, the OTC is open throughout the year, and benefits from three fantastic windsurfing areas to cater for every windsurfing ability and preference.

South Bay is a true windsurfer's playground ideal for intermediates and above, providing a large bump-and-jump sailing area with the added benefit of having a safe, enclosed sandy beach.

The Harbour Wall is easily accessible from the centre, and offers a clean smooth face at the right tide state. A good introduction to wave riding for the uninitiated, it is a great deal of fun to ride, with the added security of a safe exit channel within easy reach at all times.

Cabezo is the northern most bay of the town, which, with its typical European cross-onshore conditions provides the ideal test arena for wave and crossover equipment. Hosting World Tour events in the past, the sailing standard in the bay is awe-inspiring and is sure to captivate even the non-windsurfer's imagination.

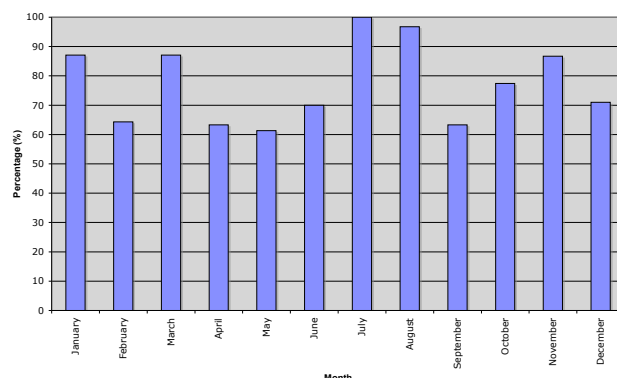
THE CENTRE

Contained in a modern building directly on the beachfront of South Bay, the centre caters for a limited number of clients each week, ensuring every opportunity to try the desired kit.

WIND STATISTICS

Boasting over 250 days of planing conditions (force four and above) a year, El Médano is Tenerife's primary windsurfing location and is well exposed to the influence of the Atlantic, offering some of the most consistent conditions found in the Canary archipelago.

A Chart to Show the Percentage of Planing Days in El Médano Per Month



The Official Test Centre
 Windsurf Holidays. With Purpose

El Médano, Tenerife

T: +44 (0)121 288 9965 (UK)
 T: +34 922 179 401 (Tenerife)

www.otc-windsurf.com
info@otc-windsurf.com