

JPSUPERSPORT118

ATAGLANCE

- The SuperSport was introduced last year and now encompasses the SuperCross range of smaller boards of last year. This series now has 6 models from a 91L version up to a 136L.
- The aim is to provide that extra bit of performance than the X-Cite Rides, bridging the gap between freeride and full on slalom. The SuperSports are therefore said to be 'damn fast' but also very accessible and easy to use for the advanced rider.
- The designs are all new for 2008, using features of the brand's slalom boards and transferring them into 'user-friendly packages'. Key attributes in development were speed, easy gybing and control, whilst still planing early and accelerating with every gust.
- Werner Gnigler has made the boards thinner, wider and redistributed the volume. The rail shape has been refined for more predictable lift and to assist in the gybe, whilst the deck shape and fin position has been calculated to make long reaches a great deal of fun.
- The bottom shape is similar to the X-Cite Rides, possessing vee throughout and a channel between the mast track and back straps. The difference is that the channel extends for longer on the SuperSports, whilst they also possess small cutouts in the tail.
- The 118 is available in either FWS or as a Pro Edition (tested here), the latter using biaxial carbon on the deck and hull, with Technora Kevlar on the deck and carbon on the base of the smaller Pro models. Good fittings-comfy straps and deckads wrapping around the rails. The Pro Edition has a 42cm G10 fin, some 10cm larger than comparative boards!

RIDEANDHANDLING

- It is a stand out board in this group with a very different performance level.
- It has a modern shape- ultra wide at 70cm, can carry an 8.5m sail without issue and has a great deal of stability at rest.
- With the 42cm fin the board does plane early but requires more input from the rider than the X-Cite Ride, requiring you to point off the wind and step back early to locate the straps, which really only belong right out on the rails.
- It accelerates instantaneously, feeling light and alert underfoot. It has incredible efficiency and absorbs all the power that the sail can give. It is best suited to partnering an efficient cambered sail, as anything less and the board almost overtakes the sail, pulling the rider's stance out of shape.
- This board is alive and exciting yet in comfortably powered conditions is relatively easy to sail,



- trimming itself well, whilst the straps and pads make it feel comfortable underfoot.
- In powered conditions, the board's light weight, width and fin size are ready to get the better of any lack of concentration. It is not for the feint hearted, especially off the wind, where we found ourselves going deeper than on others to ensure we retained control.
 - The JP takes commitment and assertion to get through the gybe. It is more demanding of technique due to the speed you enter with, and being wider, it requires a more deliberate step over and drive. On exiting the turn, the extra width in the tail plus the flat deck provide the time to finish the manoeuvre comfortably, which is also the case in the tack.

THEVERDICT

Suitability: Suited to more experienced riders of any weight, who are looking for a performance board with a wide wind range to partner their efficient cammed sail.

+ Sharp and fast on all points of sail, with an electric nature.

- Intermediates and those looking for a relaxed ride should look to the X-Ciite Ride

The most specialist tool in this line-up, an exciting ride for experienced riders, yet once used to it, it provides the returns. It should be considered a 125L board with an impressive high wind performance.



The Official Test Centre
Windsurf Holidays. With Purpose

El Médano, Tenerife

T: +44 (0)121 288 9965 (UK)
T: +34 922 179 401 (Tenerife)

www.otc-windsurf.com
info@otc-windsurf.com



I can't recommend the OTC enough. While I was there I tried about 8 boards and quite a lot of sails. The range of kit and the lads who run the place are just brilliant.
 Ken Morton [windsurf.co.uk Forum](http://www.windsurf.co.uk/Forum)

What is The OTC?

CONCEPT

The OTC is a unique windsurfing centre offering the first real opportunity for you to compare the boards and sails from each major brand for yourself ... and all in the relaxed atmosphere of a holiday environment. It was the brainchild of Tris Best, who, acknowledging the privileged position he was in whilst testing all the latest windsurfing equipment for magazines, wanted to extend the same opportunity to a wider audience.

EQUIPMENT

The centre stocks the very latest equipment from all the major board and sail manufacturers, including:

Boards: F2, Fanatic, Goya, JP Australia, Mistral, Naish, RRD, Starboard, Tabou, Witchcraft

Sails: Ezzy, Gaastra, Neil Pryde, Naish, North Sails, Severne, Simmer, Tushingham

From wave to freestyle and crossover, into the expansive realms of freeride, almost every discipline and equipment category is represented, catering for all rider styles and abilities.

LOCATION

The centre is situated in the town of El Médano on the island of Tenerife just ten minutes transfer from Reina Sofia Airport in the south. With an average air temperature of 22 degrees Celsius, the OTC is open throughout the year, and benefits from three fantastic windsurfing areas to cater for every windsurfing ability and preference.

South Bay is a true windsurfer's playground ideal for intermediates and above, providing a large bump-and-jump sailing area with the added benefit of having a safe, enclosed sandy beach.

The Harbour Wall is easily accessible from the centre, and offers a clean smooth face at the right tide state. A good introduction to wave riding for the uninitiated, it is a great deal of fun to ride, with the added security of a safe exit channel within easy reach at all times.

Cabezo is the northern most bay of the town, which, with its typical European cross-onshore conditions provides the ideal test arena for wave and crossover equipment. Hosting World Tour events in the past, the sailing standard in the bay is awe-inspiring and is sure to captivate even the non-windsurfer's imagination.

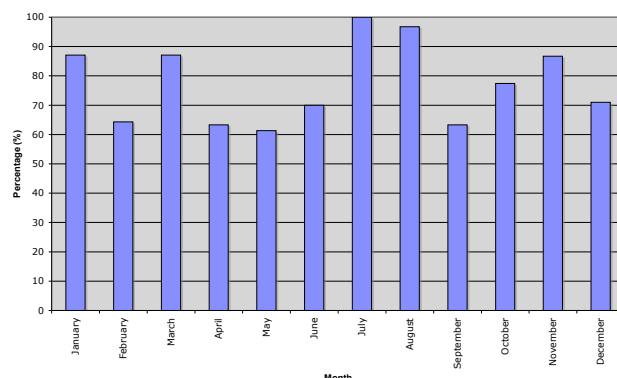
THE CENTRE

Contained in a modern building directly on the beachfront of South Bay, the centre caters for a limited number of clients each week, ensuring every opportunity to try the desired kit.

WIND STATISTICS

Boasting over 250 days of planing conditions (force four and above) a year, El Médano is Tenerife's primary windsurfing location and is well exposed to the influence of the Atlantic, offering some of the most consistent conditions found in the Canary archipelago.

A Chart to Show the Percentage of Planing Days in El Médano Per Month



The Official Test Centre
Windsurf Holidays. With Purpose

El Médano, Tenerife

T: +44 (0)121 288 9965 (UK)
 T: +34 922 179 401 (Tenerife)

www.otc-windsurf.com
info@otc-windsurf.com