

FANATICSHARK145

ATAGLANCE

- The Shark series comprises of three models; 130L, 145L and 160L.
- Produced as standard in HRS (High Resistance Skin) technology as tested here, the two smaller versions are also available in Ltd construction, using Hybrid Sandwich technology with a G10 fin instead of the pre-preg moulded fin here.
- Fanatic decided not to take the easy approach in creating a board that must appeal to intermediates by building wide, easy to plane shapes with wide short outlines. Instead they focused on models with both intermediates and experienced riders in mind, offering a wide all-round performance.
- The 145 has been refined for 2008 with a much smoother rocker-line to help cope in diverse sea states, helping the board to float over the worst chop without losing speed.
- The bottom shape sees a progression from vee with double concave in the nose and shoulders to straight vee by the mast track, remaining present for the rest of the board's length.
- There are plenty of footstrap options to suit all abilities and the dome of the deck is comfortable whatever the strap arrangement.
- HRS version is said to offer an 'unbeatable value package...' Is the price competitive for you?

RIDEANDHANDLING

- As you step on the Shark from one of the latest designs in this group, you feel the Shark is beginning to feel a little old in shape. At 263cm long, it is one of the longer boards but it has a reasonable width of 75cm and has good stability at rest, making it forgiving for intermediates.
- As power is supplied, the board tracks in a straight-line well and gains momentum easily.
- The acceleration is progressive rather than quick, and as it gains speed you don't notice how fast you are going as the board feels so controlled and well mannered.
- It is one of the heavier boards in the group, and doesn't really feel very slippery over the water – a great trait for the intermediate, but not really endearing to the experienced rider.
- Comfortably powered, it is surprisingly fast—although its weight dumbs the feedback sensation down. This could be partly due to the heavier tail keeping the board in contact with the water better as you ride over chop, helping you to maintain trim and control.



- The board cruises through lulls without issue. It doesn't point as well upwind as some, perhaps due to its fin.
- One of the greatest features are the deckpads – some of the best around, feeling adhesive yet soft and comfortable for a secure ride.
- Footsteering is easy and the board responsive, not the most immediate here, but comfortable due to strap placement.
- It doesn't have the gybing versatility of some of more modern design, preferring a more measured prescribed arc. Crank it in hard and the rails tend to snatch at the water and stall. This is less of an issue for the intermediate, who is looking for a predictable response rather than aggressive levels of grip.

THEVERDICT

Suitability: Although beginning to feel its age in design, the Shark remains a great performer for the improving sailor. It is durable, a great tutor and with bags of room for growth.

+ Forgiving, controllable and super comfortable, with hidden performance.

- Advanced riders will discover the Shark's flaws in gybing versatility.

A great performer for the intermediate, ensuring a quick, enjoyable progression into planing windsurfing.



The Official Test Centre
Windsurf Holidays. With Purpose

El Médano, Tenerife

T: +44 (0)121 288 9965 (UK)
T: +34 922 179 401 (Tenerife)

www.otc-windsurf.com
info@otc-windsurf.com



I can't recommend the OTC enough. While I was there I tried about 8 boards and quite a lot of sails. The range of kit and the lads who run the place are just brilliant.
 Ken Morton [windsurf.co.uk Forum](http://www.windsurf.co.uk/Forum)

What is The OTC?

CONCEPT

The OTC is a unique windsurfing centre offering the first real opportunity for you to compare the boards and sails from each major brand for yourself ... and all in the relaxed atmosphere of a holiday environment. It was the brainchild of Tris Best, who, acknowledging the privileged position he was in whilst testing all the latest windsurfing equipment for magazines, wanted to extend the same opportunity to a wider audience.

EQUIPMENT

The centre stocks the very latest equipment from all the major board and sail manufacturers, including:

Boards: F2, Fanatic, Goya, JP Australia, Mistral, Naish, RRD, Starboard, Tabou, Witchcraft

Sails: Ezzy, Gaastra, Neil Pryde, Naish, North Sails, Severne, Simmer, Tushingham

From wave to freestyle and crossover, into the expansive realms of freeride, almost every discipline and equipment category is represented, catering for all rider styles and abilities.

LOCATION

The centre is situated in the town of El Médano on the island of Tenerife just ten minutes transfer from Reina Sofia Airport in the south. With an average air temperature of 22 degrees Celsius, the OTC is open throughout the year, and benefits from three fantastic windsurfing areas to cater for every windsurfing ability and preference.

South Bay is a true windsurfer's playground ideal for intermediates and above, providing a large bump-and-jump sailing area with the added benefit of having a safe, enclosed sandy beach.

The Harbour Wall is easily accessible from the centre, and offers a clean smooth face at the right tide state. A good introduction to wave riding for the uninitiated, it is a great deal of fun to ride, with the added security of a safe exit channel within easy reach at all times.

Cabezo is the northern most bay of the town, which, with its typical European cross-onshore conditions provides the ideal test arena for wave and crossover equipment. Hosting World Tour events in the past, the sailing standard in the bay is awe-inspiring and is sure to captivate even the non-windsurfer's imagination.

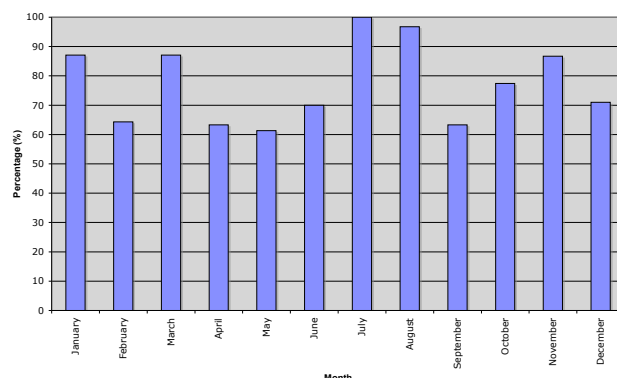
THE CENTRE

Contained in a modern building directly on the beachfront of South Bay, the centre caters for a limited number of clients each week, ensuring every opportunity to try the desired kit.

WIND STATISTICS

Boasting over 250 days of planing conditions (force four and above) a year, El Médano is Tenerife's primary windsurfing location and is well exposed to the influence of the Atlantic, offering some of the most consistent conditions found in the Canary archipelago.

A Chart to Show the Percentage of Planing Days in El Médano Per Month



The Official Test Centre
Windsurf Holidays. With Purpose

El Médano, Tenerife

T: +44 (0)121 288 9965 (UK)
 T: +34 922 179 401 (Tenerife)

www.otc-windsurf.com
info@otc-windsurf.com